

Motorized Roller Blind / Roman Blind

NBT 35

(Automation)



- High Quality and Reliable Tubular Motors.
- NBT Q is exceptionally Silent.
- NBT SL offers excellent Value.
- Compatible with Home Automation Systems.
- Used in Roller, Roman Blinds.

NBT 35 TUBULAR MOTOR (AUTOMATION)

NBT 35's Unique Features

This compact design motorized roller blind offers a variety of uses: from commercial to home.

NBT 35 Tubular motor realizes quiet operation.

Roman Blind Pulley and Velcro Tracks Available.

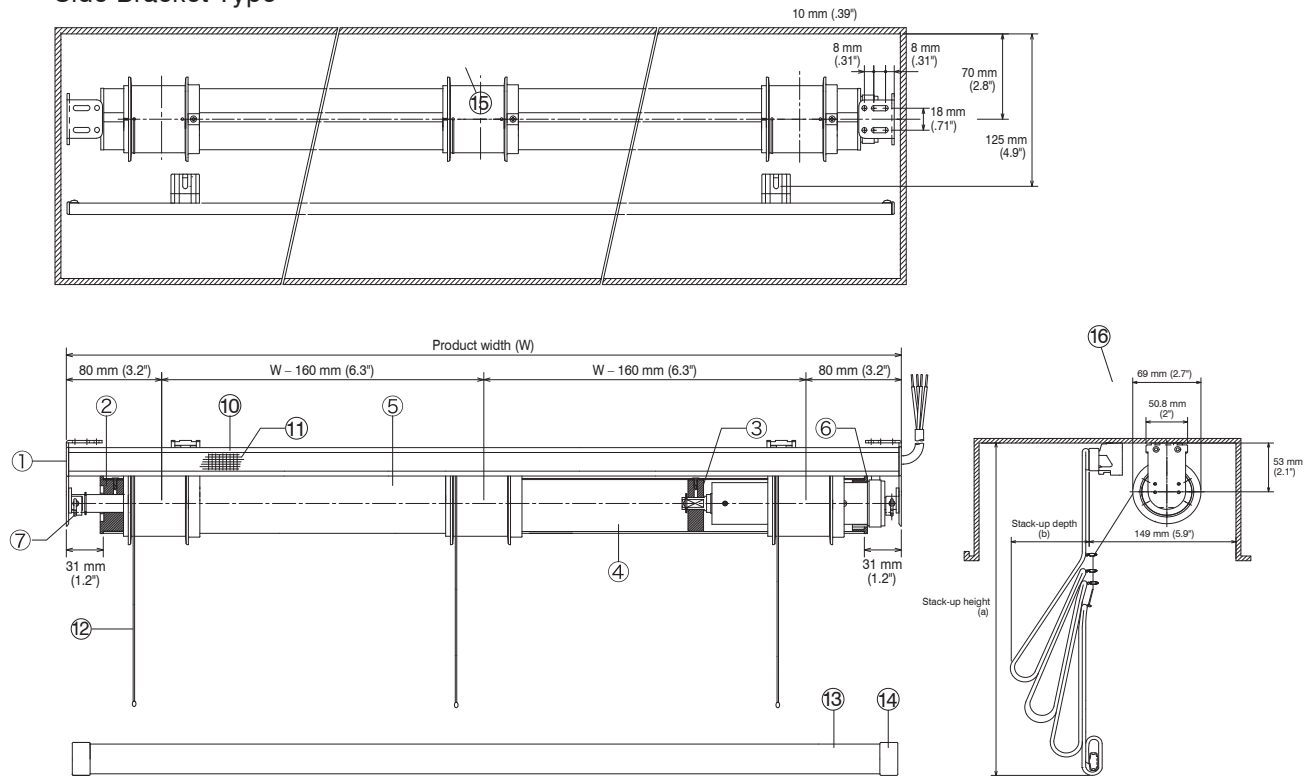
Pelmet space Roller 4", Pelmet space Roman 5".

Max. width 2.5 mtr., max. height 4 mtr., max. weight 8 kg.

- Mechanic Limit. ● External Switch. ● Switch Direction. ● Jog & Tilt.
- External Controller. ● Automation. ● Low - Noise.

Structure Drawing - Roman Blind

Side Bracket Type



Components and Materials

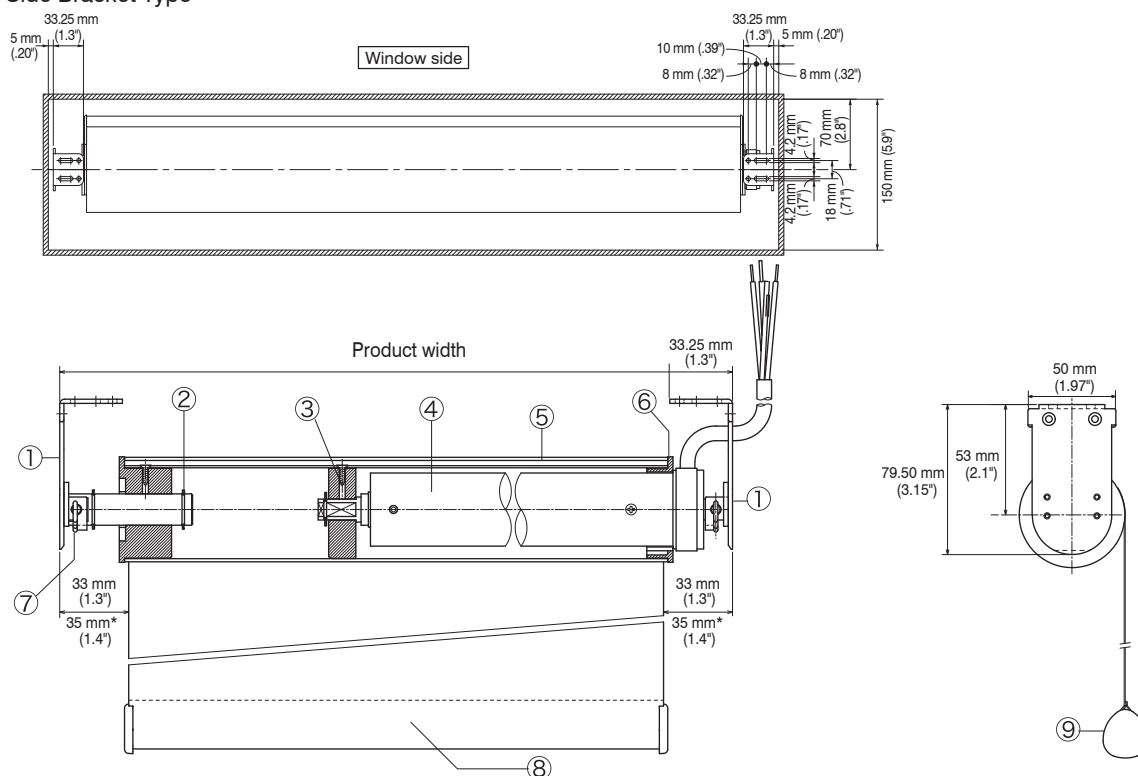
Side Bracket Type / Head rail Type

No.	Components	Material
①	NBT35 End Side Bracket	MS
②	NBT35 Pipe End	Polyacetal resin
③	NBT35 Drive	Polyacetal resin
④	NBT35 Tubular Motor	—
⑤	NBT35 Roller Pipe ϕ 50	Aluminum
⑥	NBT35 Limit Crown	Polyacetal resin
⑦	Split Pin	Steel
⑧	Weight Bar	Aluminum

No.	Components	Material
⑨	MT03 Weight Bar Cap	Polyethylene resin
⑩	Freel Head Rail	Aluminum
⑪	RS Slide - in Velcro	Polypropylene
⑫	Lift Cord ϕ 1.2	Polyester Fiber
⑬	RS Weight Bar 25	Steel
⑭	RS Weight Bar Cap 25	Polyethylene resin
⑮	NBT35 - RS Recoiling Pulley	Polyacetal resin
⑯	Freel Bracket	Polyacetal resin

Structure Drawing - Roller Blind

Side Bracket Type



*Dimensions for the ratio of the width and height is 1 : 3 or more.

NBT 35 Motor Specifications

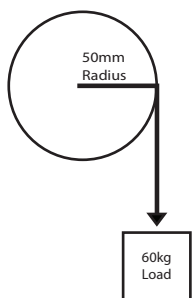
NBT 35SL 6/28 Motor Specifications

Power Source Voltage	V	AC220-230
Frequency	Hz	50/60
Current	A	0.67
Power Consumption	W	155
Rated Torque	Nm	6
Rated RPM	rpm	28
Rated Running Time	min	4
Ambient Temperature	°C	-10°-50°
Maximum Limit turn		36
Length L1 & L2		514 & 487
Motor Db Level	Db	35Db

NBT 35Q 6/20 Motor Specifications

Power Source Voltage	V	AC220-230
Frequency	Hz	50/60
Current	A	0.57
Power Consumption	W	133
Rated Torque	Nm	6
Rated RPM	rpm	20
Rated Running Time	min	4
Ambient Temperature	°C	-10°-50°
Maximum Limit turn		36
Length L1 & L2		550 & 535
Motor Db Level	Db	30Db

Formula of Motor Load Capacity



? N.m

$$\text{Torque (N.m)} = \text{Radius (mm)} \times \text{Load (kg)} \div 100$$

$$= 50 \text{ (mm)} \times 60 \text{ (kg)} \div 100 = 30 \text{ (N.m)}$$

? Kg

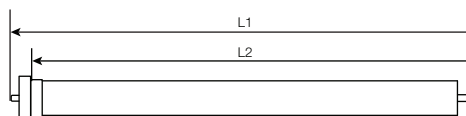
$$\text{Load (Kg)} = \text{Torque (N.m)} \times 100 \div \text{Radius (mm)}$$

$$= 30 \text{ (N.m)} \times 100 \div 50 \text{ (mm)} = 60 \text{ (kg)}$$

Remark: Calculation in diagram base on the Newton's Law
(1 Inch=25.4mm 1 pound=0.454Kg)

Product Weight

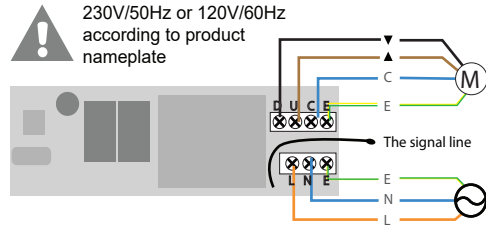
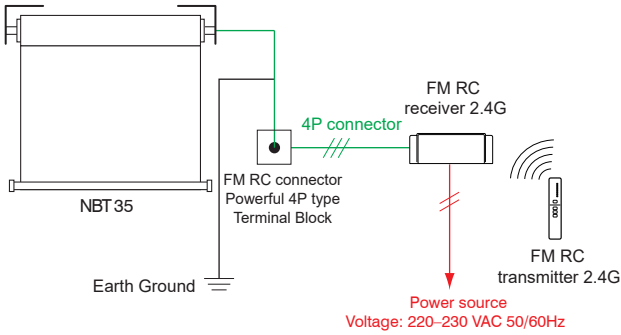
4.2 kg (9.3 lb)
(width: 2500 mm/98.5" without screen)



NBT 35 TUBULAR MOTOR (AUTOMATION)

Basic Wiring and Connecting Diagram Motor & Receiver

FM Remote Operation



Maximum output power :- 500W One NBT 50B receiver can store maximum 20 emitter channels. If there are already 20 channels, it will take turns to Cover the last channel.

Motor on right side	Motor on left side
1: Brown	1: Black
2: Black	2: Brown
3: Blue	3: Blue
4: Yellow/Green	4: Yellow/Green

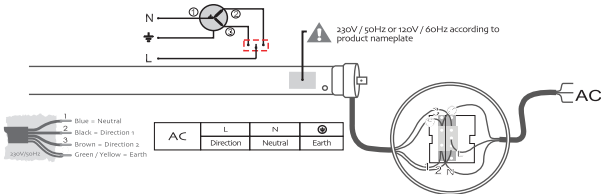
RECEIVER WITH JOG NBT JR

- One receiver per motor.
- For motor up to 120N.m
- Compatible with multiple wall switch input.
- Dry contact input.
- External lead program button.
- Jog mode (Tilt for venetian).
- Work with all NBT emitters.
- Pair and store up to 20 emitters.
- Input voltage: 230V.
- Output voltage: 230V.
- Power output: 600W.
- Radio frequency: 433.92MHz.
- Working temperature: - 10 °C~+55 °C.
- Dimension: 100mm x 27mm x 40.5mm.

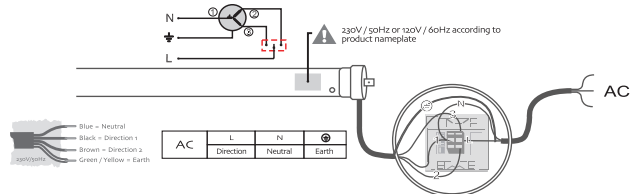
RECEIVER NBT 50B

- One receiver per motor.
- For motor up to 120N.m
- Pair and store up to 20 emitters.
- Input voltage: 230V.
- Output voltage: 230V.
- Power output: 500W.
- Radio frequency: 433.92MHz.
- Working temperature: - 10 °C~+55 °C.
- Dimension: 100mm x 27mm x 40.5mm.

Circuit installation A



Circuit installation B



Circuit installation C

